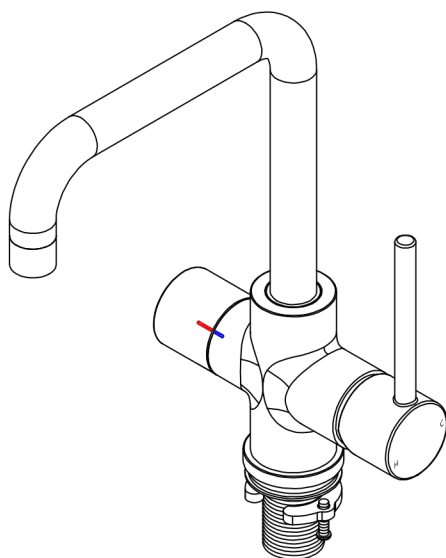


# F201-U / F201-C

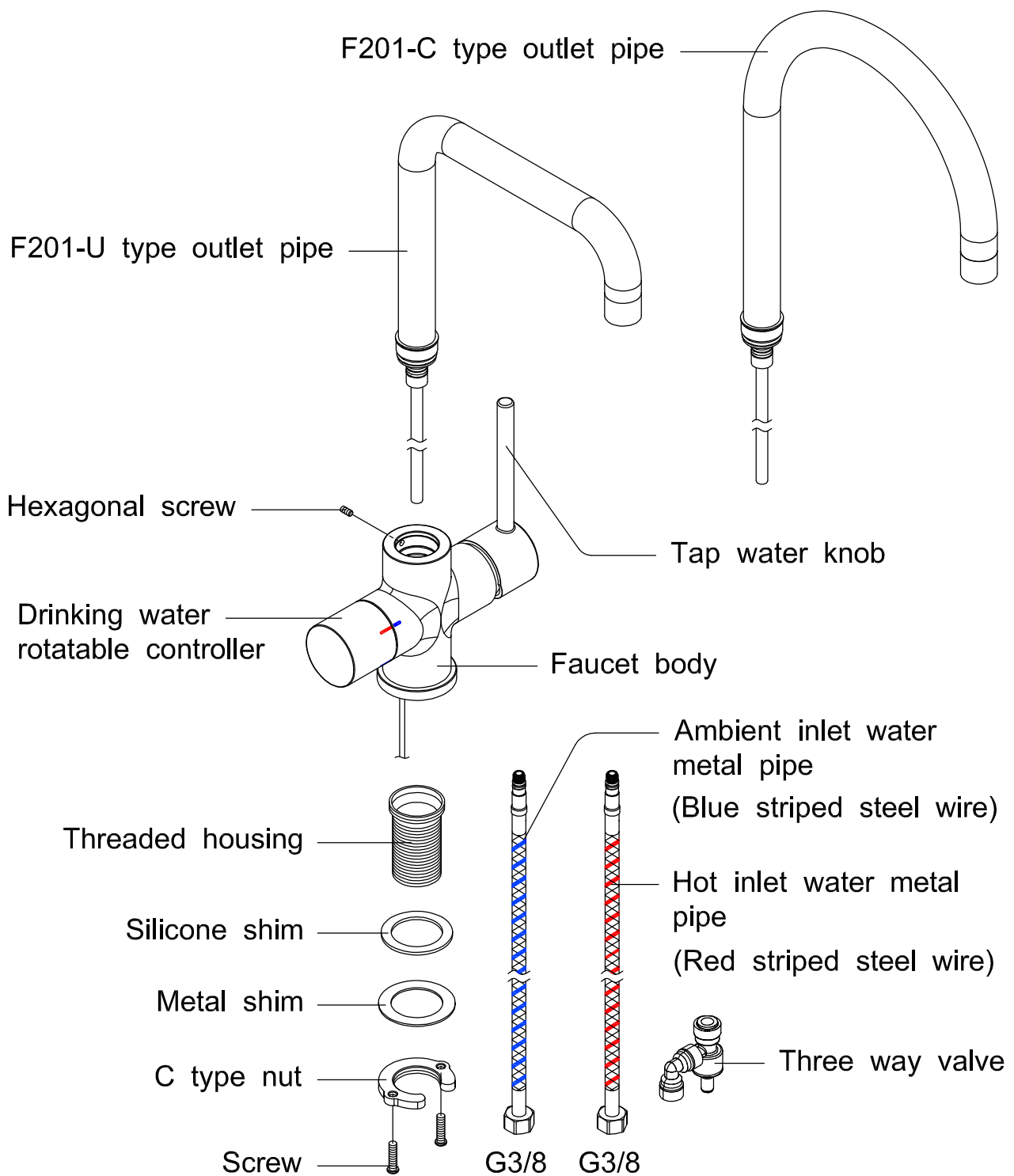
## 5-in-1 Multifunctional Faucet Operation Manual



Contents	Page
Preface / Parts	1
Installation	2,3,4,5
Faucet installation	6
Drinking water faucet installation	7 - 11

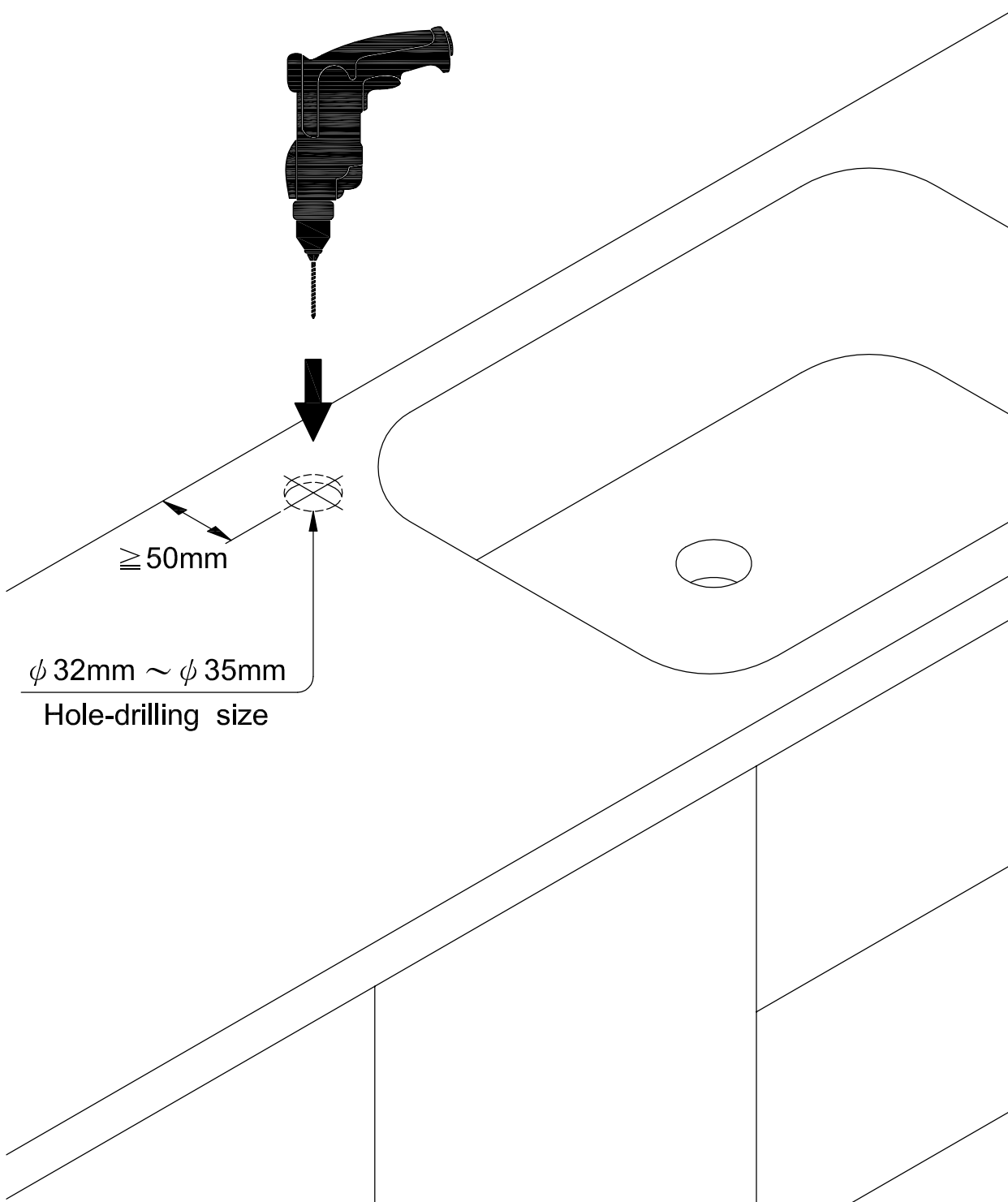
# Preface / Parts

Please check the parts are all correct in the box, and read the manual thoroughly. To install and use the faucet by following instruction to avoid damaging.



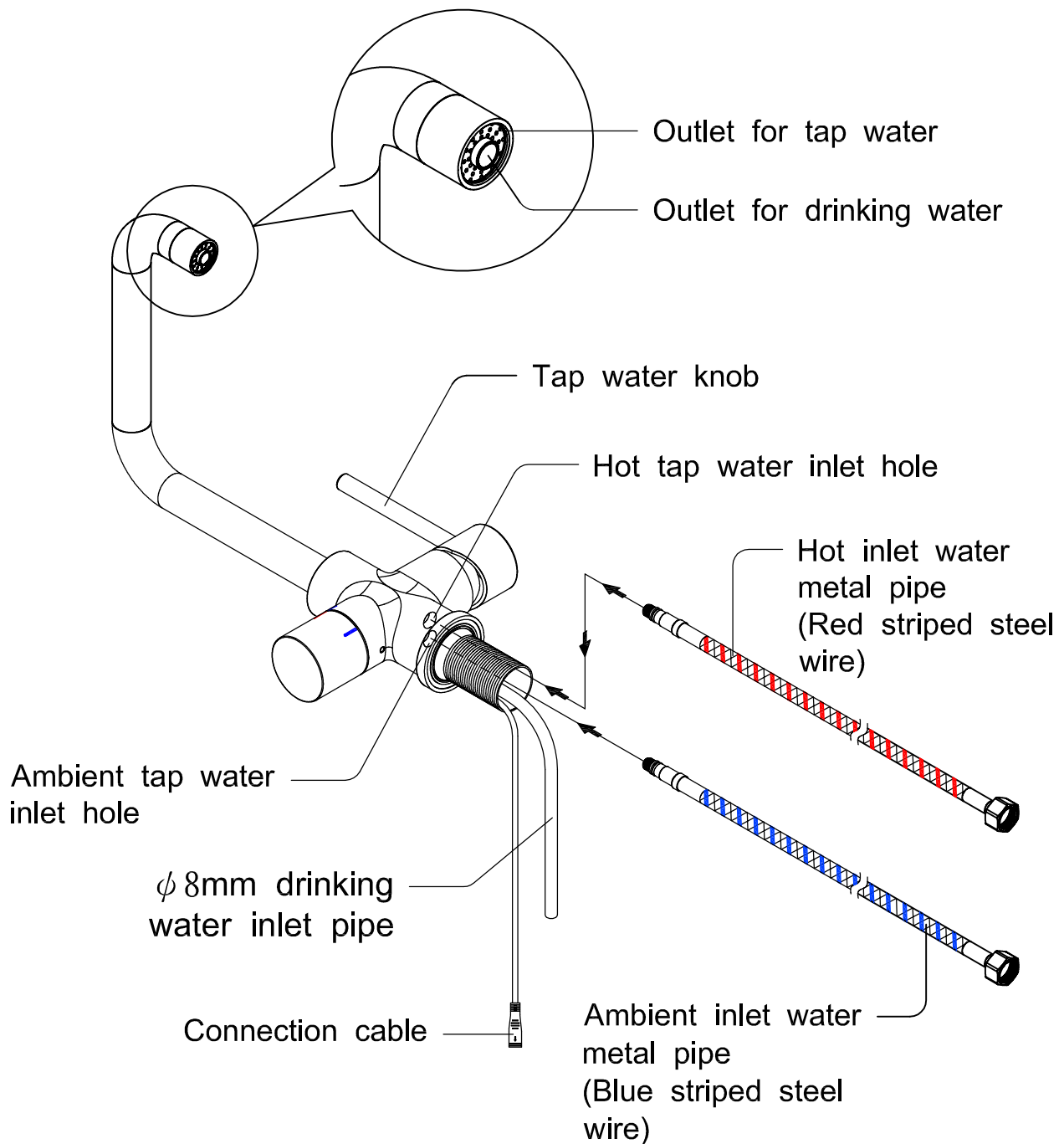
# Installation

1. Please find the area on the table that is more than 50mm away from the wall, then drill a hole between the  $\phi 32\text{mm}$  to  $\phi 35\text{ mm}$  for faucet installation.



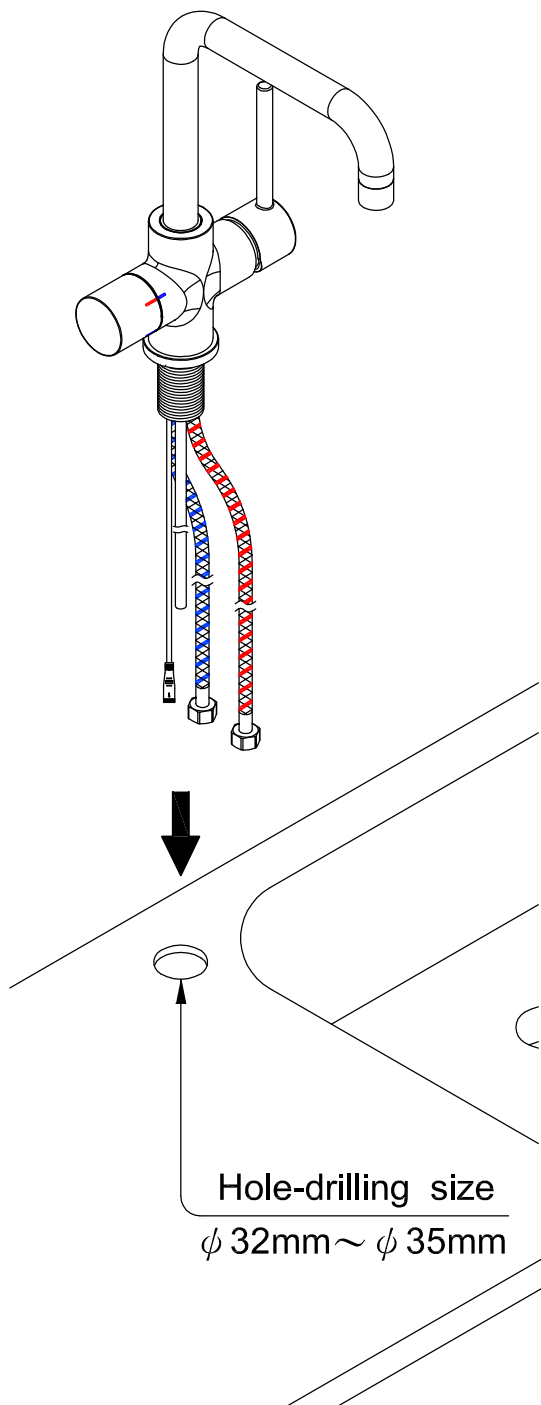
# Installation

2. Follow the marked position in the image below, insert hot and ambient inlet water pipes to the correspond hole then spin the pipe to fix them into the faucet body.

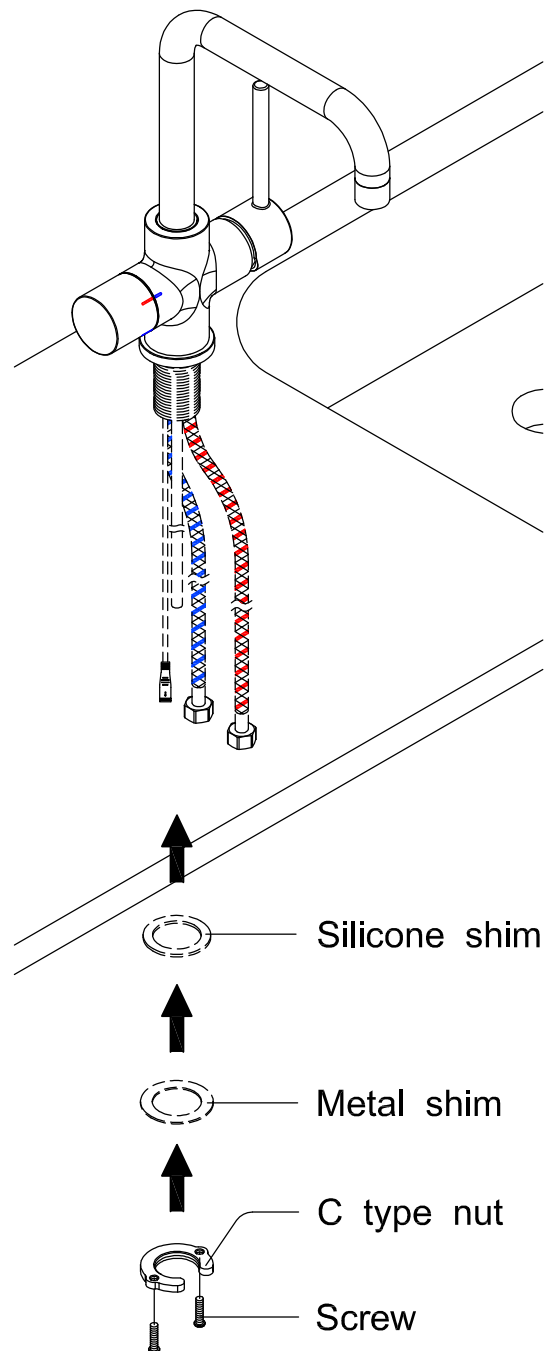


# Installation

3. After faucet assembled, insert threaded housing into drilled hole including all pipes and the cable.

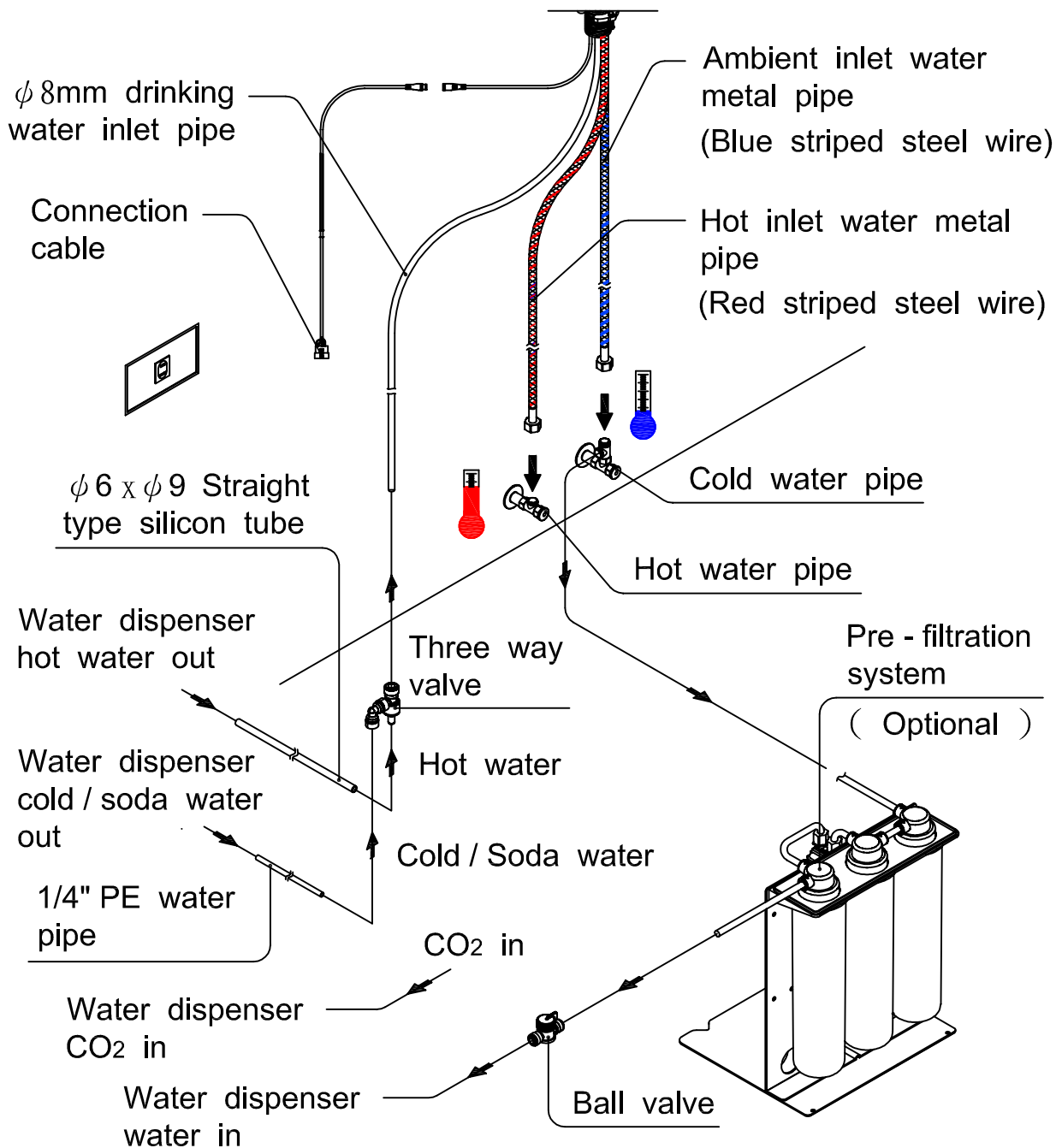


4. Follow the sequence as marked in below image, install silicone shim, metal shim, and C type nut, then tighten the screws.



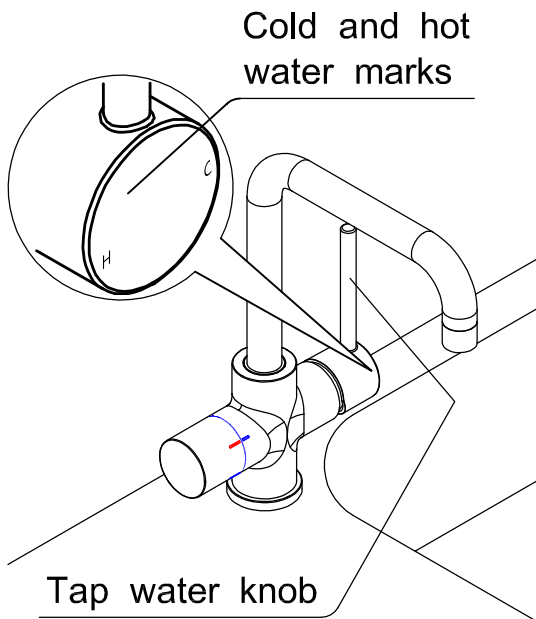
# Installation

5. Please turn off power supply and water source before piping installation, then connect hot and ambient inlet water metal pipe with hot water source and ambient water source. Connect  $\phi 8\text{mm}$  drinking water inlet pipe and three way valve to water dispenser as marked in below image. Finally, connect the connection cable with the connector on rear panel, and plug in the power cord.

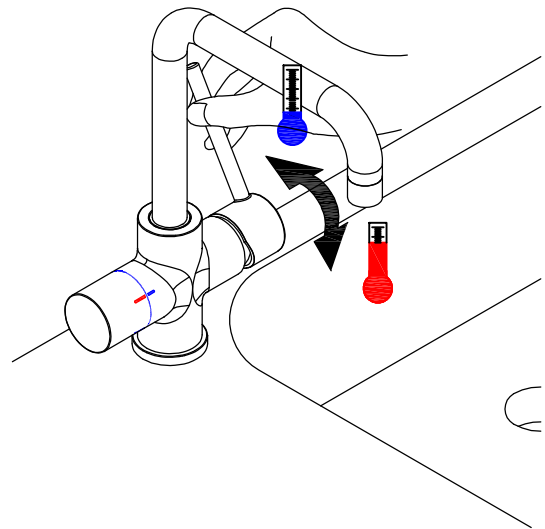


# Faucet instruction

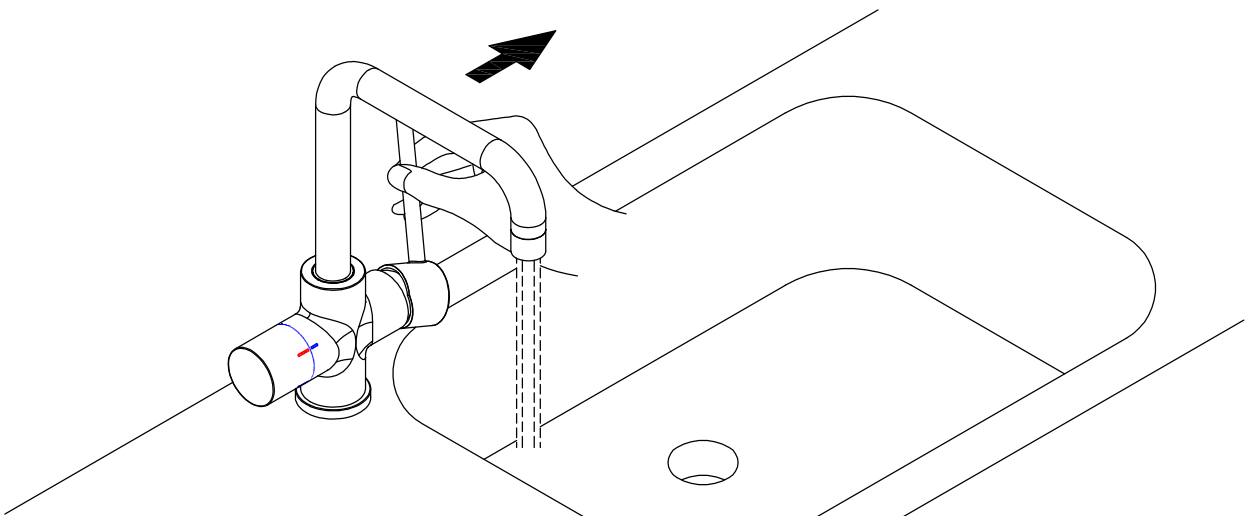
1. There are two marks on the faucet knob for cold and hot water. **C** is ambient water and **H** is hot water.



2. Hold faucet knob and rotate, follow the arrow direction to choose hot or ambient water.



3. Pull the knob to right as arrow direction, the water will be dispensed.



# Drinking water faucet instruction

There are three functions on the rotation controller and the icon of turning off the water supply.



Hot water icon



Stop dispensing icon



Cold water icon



Stop dispensing icon



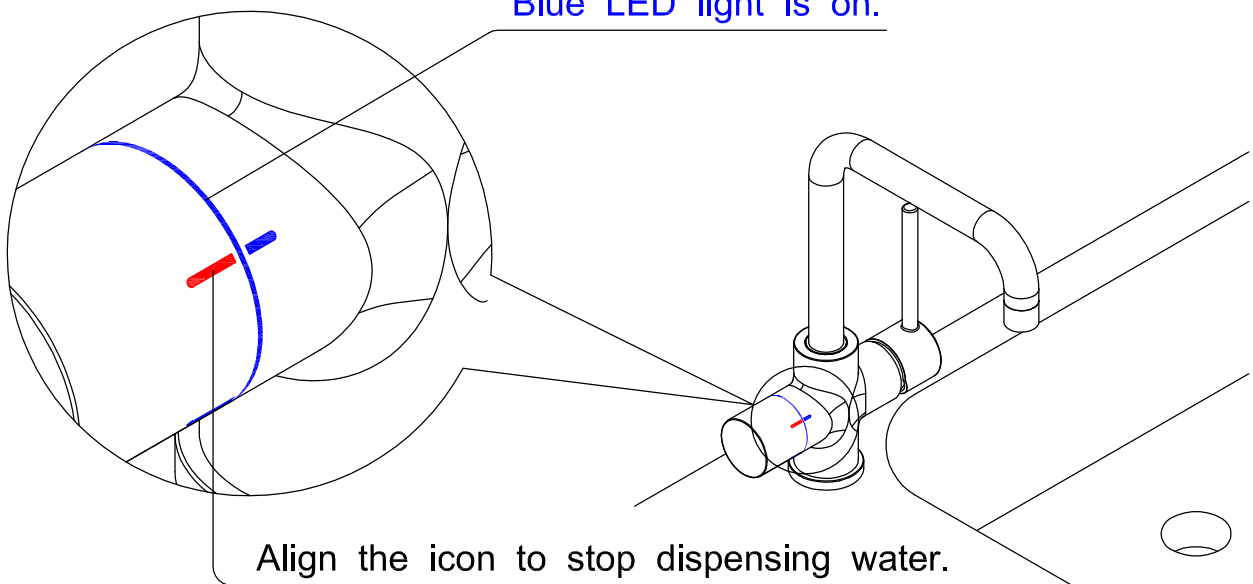
Sparkling water icon



Warm water icon

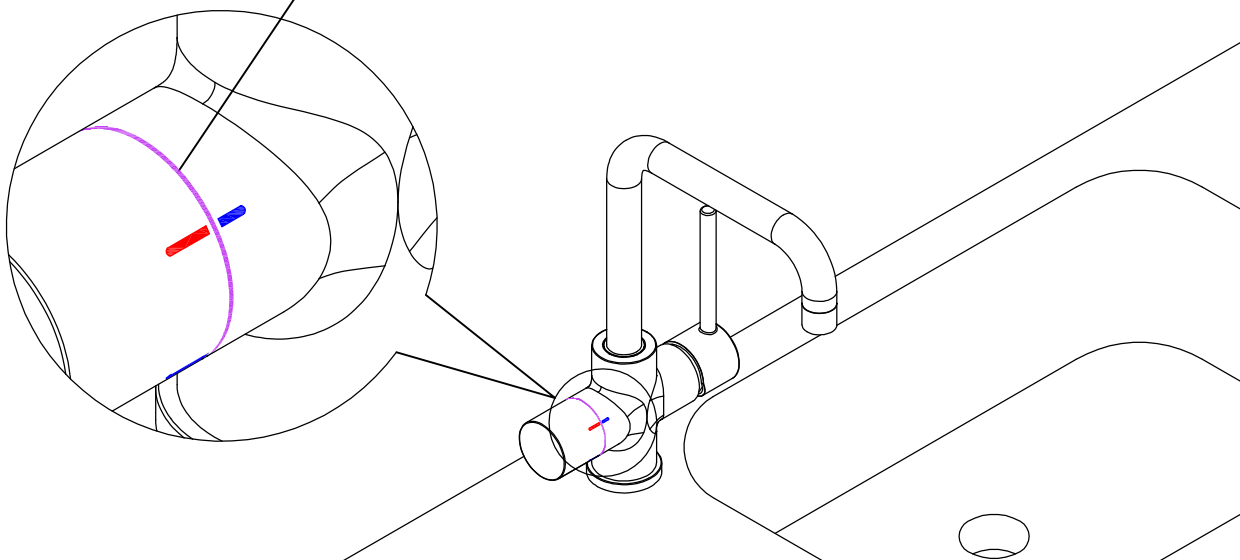
Align the stop dispensing icon on the rotation controller with the stop dispensing icon on the faucet body to stop dispensing water; the blue LED light will be on.

Blue LED light is on.

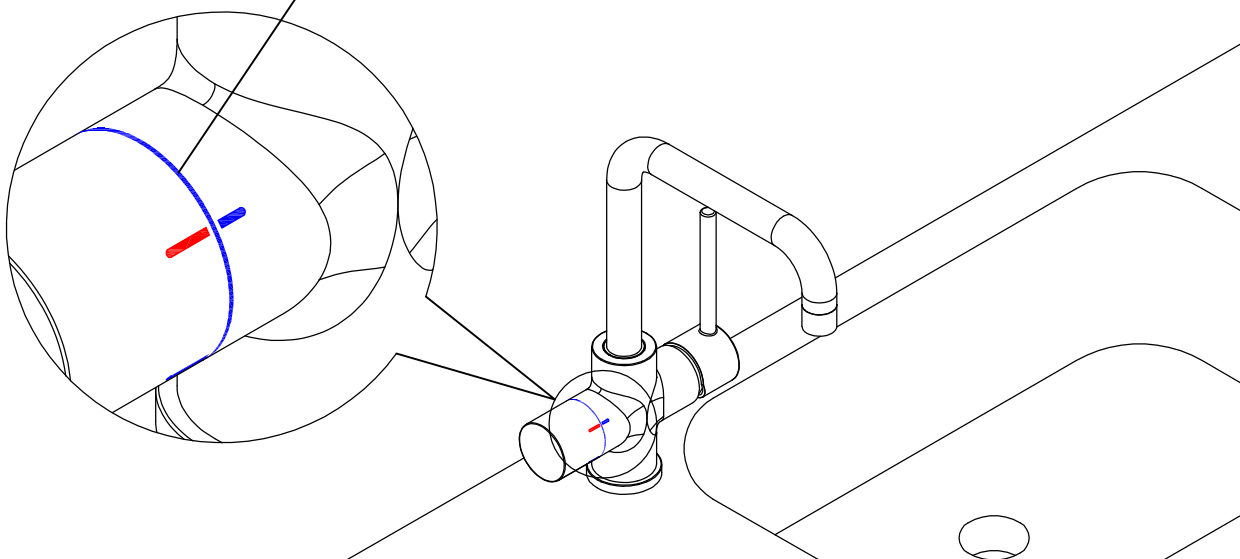


# Drinking water faucet instruction

The LED light will be purple, when the water dispenser is heating hot water.

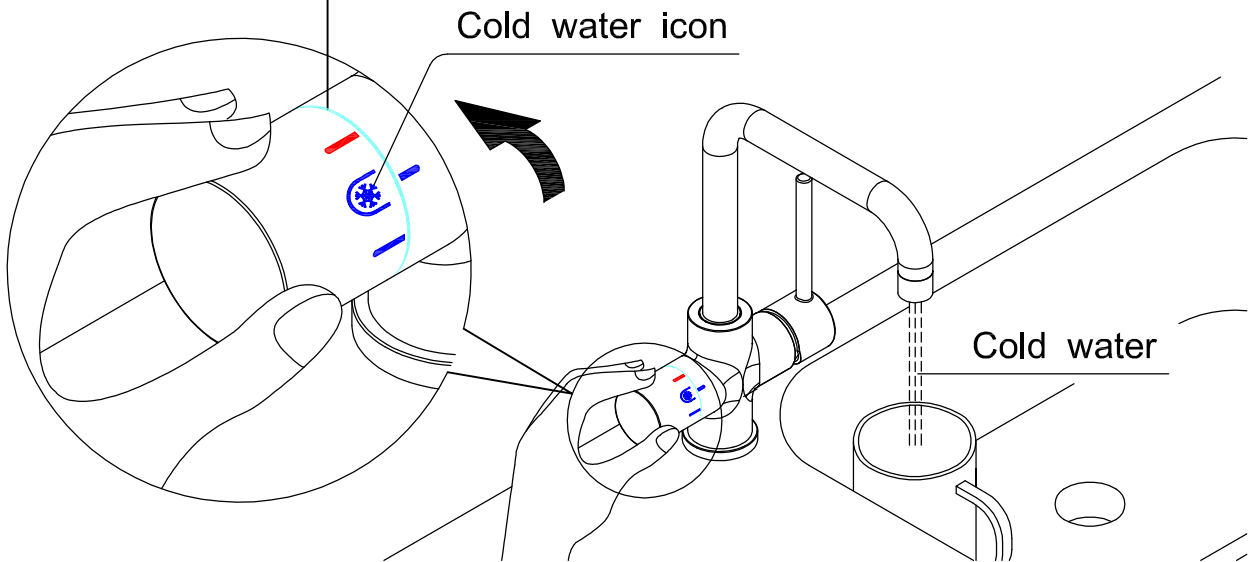


The LED light returns to blue color, when heating process is done.

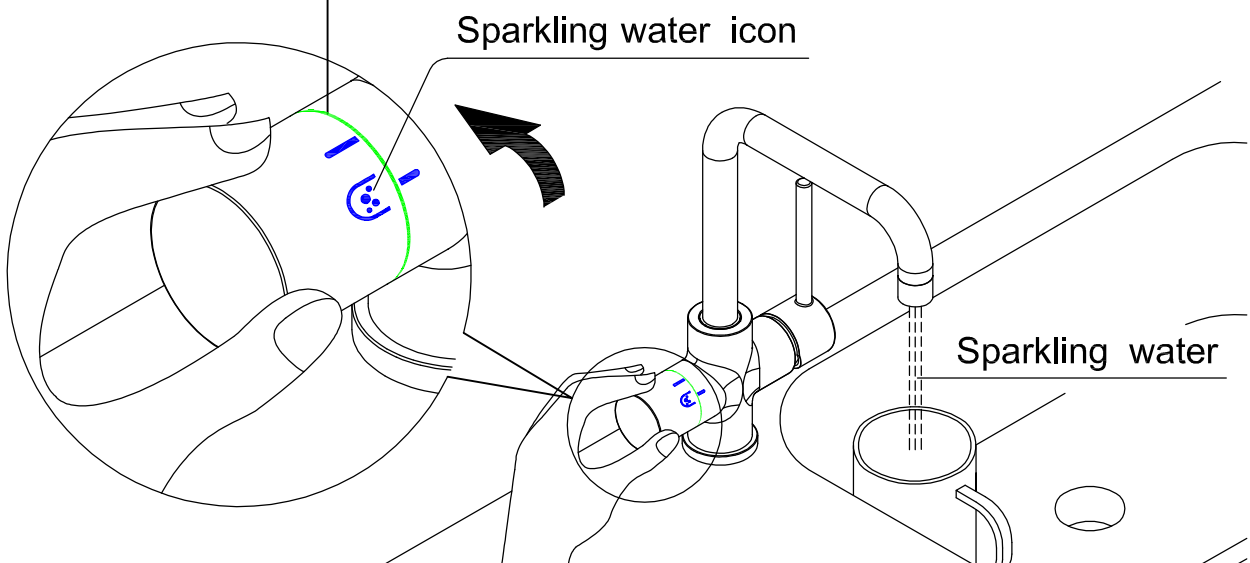


# Drinking water faucet instruction

Dispensing cold water,  
the lighter blue color LED will be on.

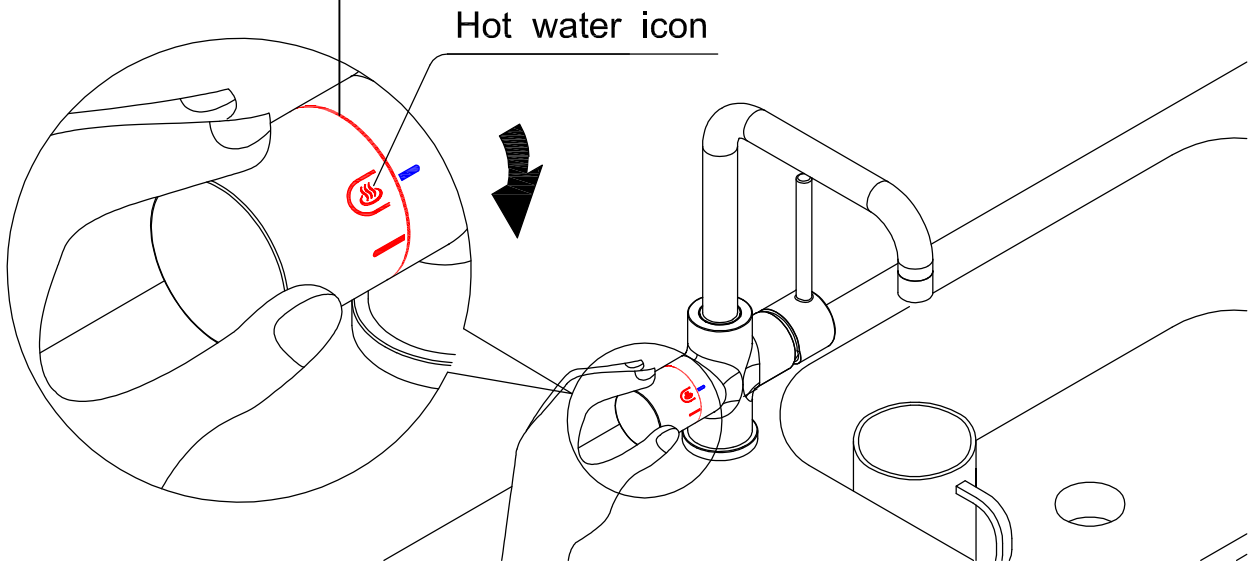


Dispensing sparkling water,  
the green color LED will be on.

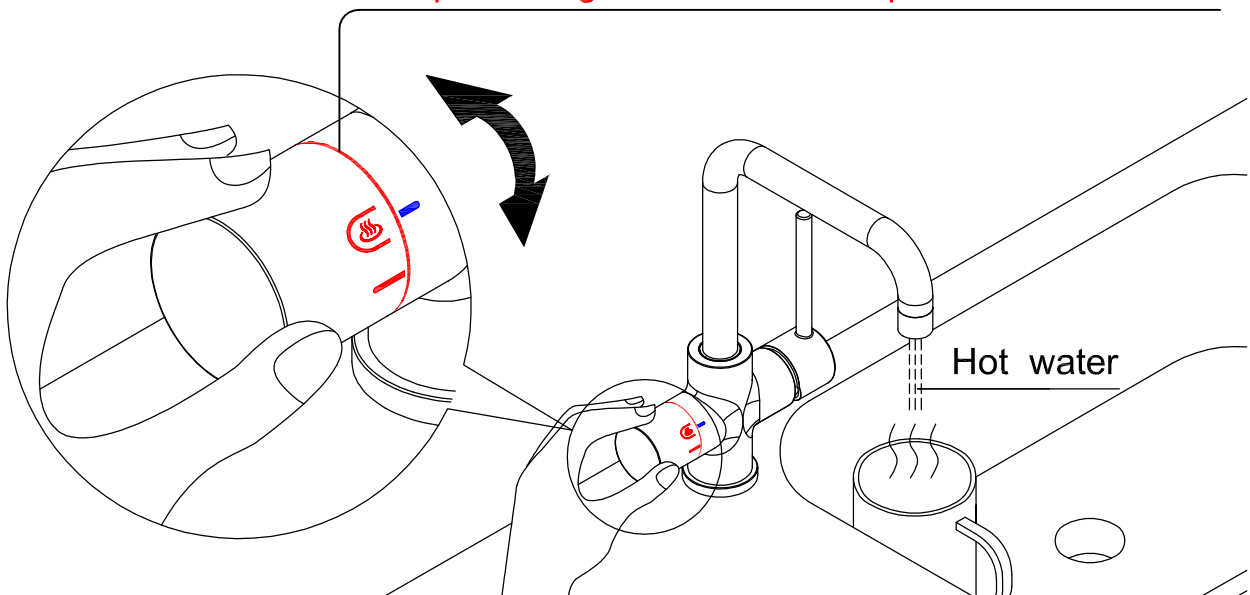


# Drinking water faucet instruction

Rotate the controller to hot water icon, the red LED light will be blinking, this is to unlock the hot water, the hot water will not be dispensed.

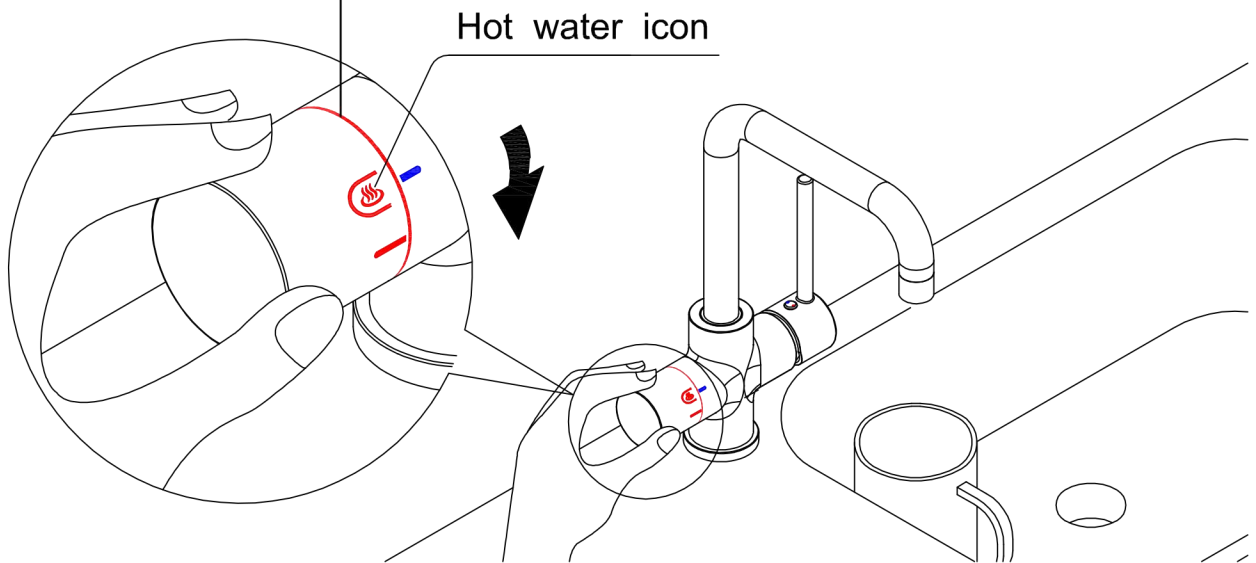


Please rotate again within 3 seconds when red LED light is blinking, then the red LED light will stop blinking and start to dispense hot water.



# Drinking water faucet instruction

To dispense ambient water from 4 water option faucet, please rotate the controller once to hot water icon, the red LED light will start blinking. Keep staying on hot water icon.



The LED light will turn white and ambient water will be dispensed automatically after 3 seconds.

