

M106U series

Under Sink

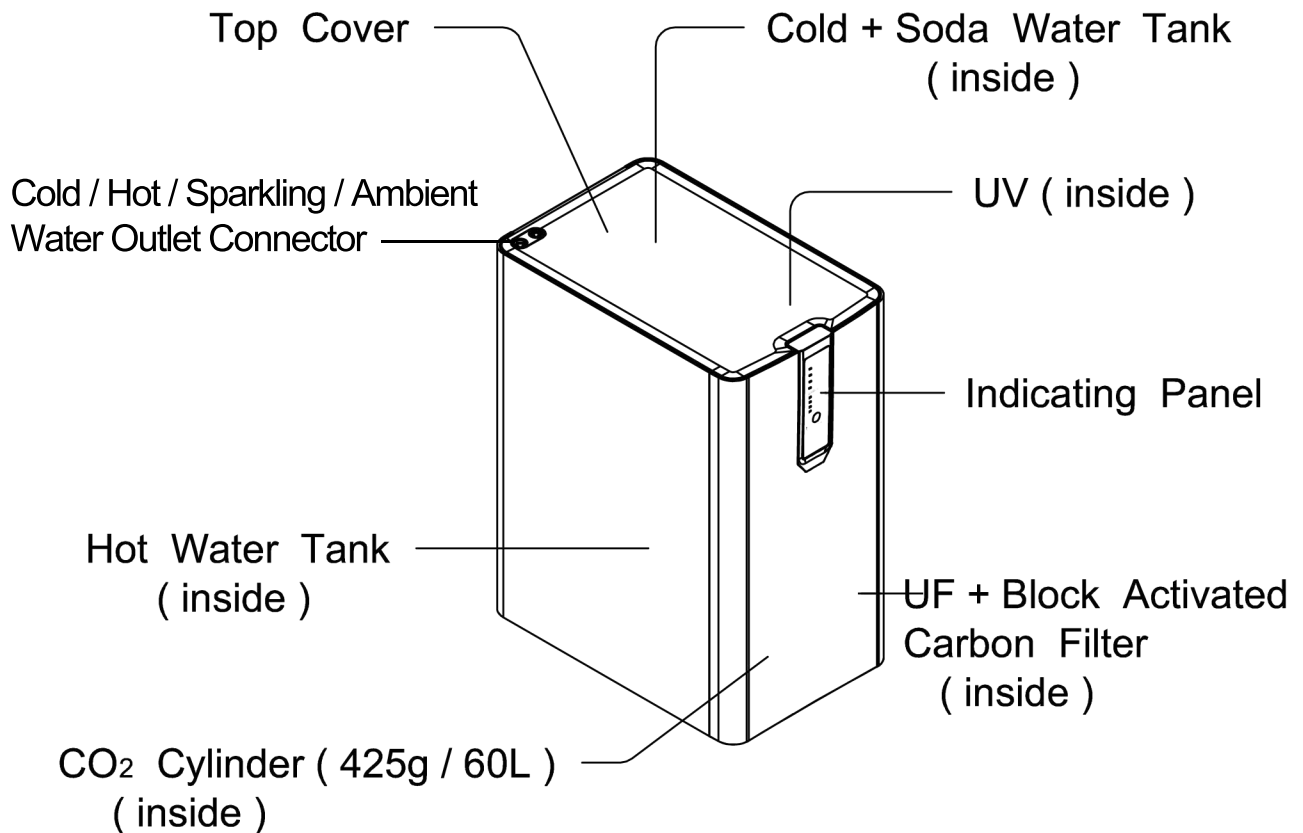
Sparkling Water Dispenser Operation Manual



Please read these instructions completely before operating this unit

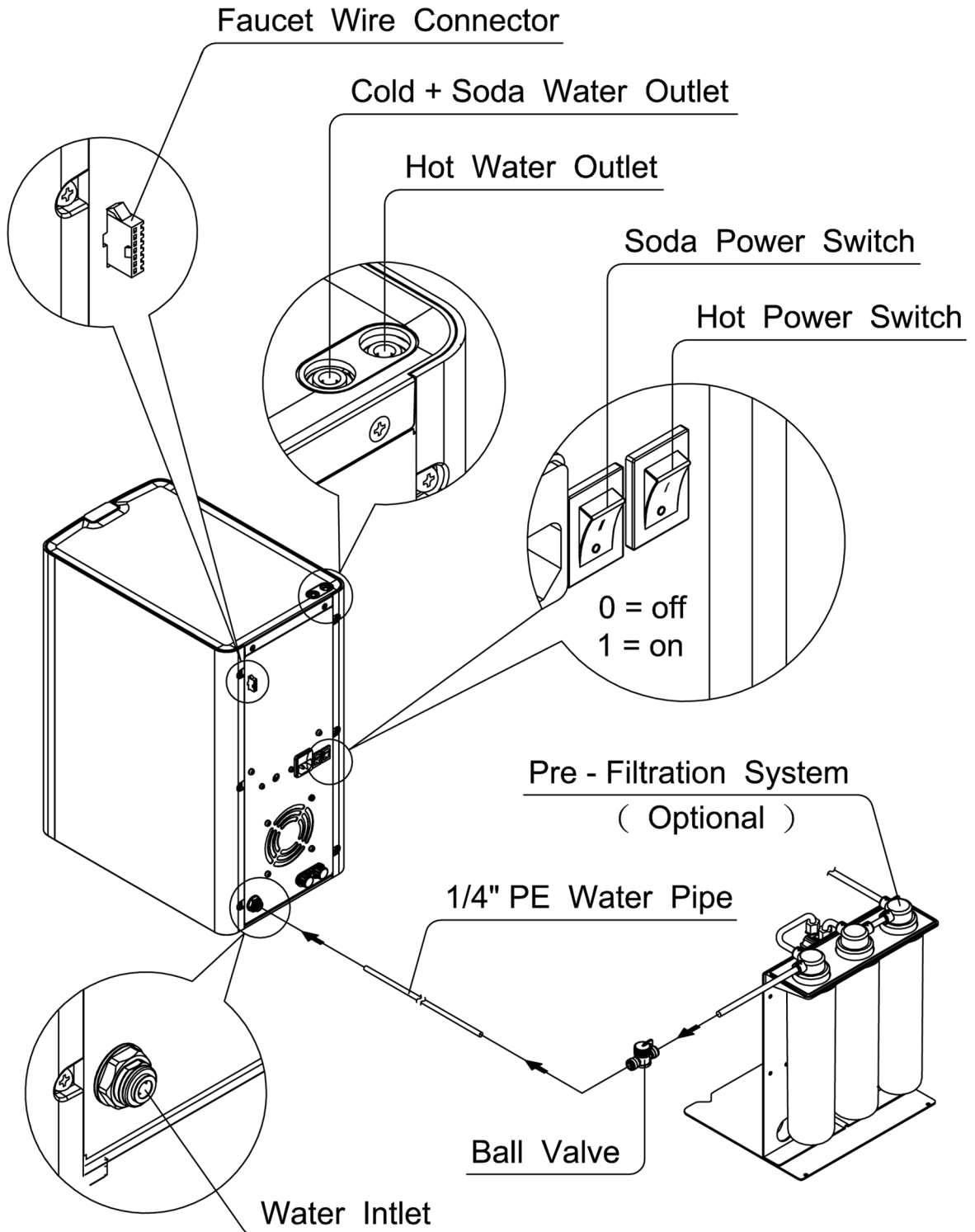
PREFACE / PARTS

Before using this machine, we advise you to read this manual thoroughly. Please follow the instructions for proper operation to prevent risk or damage.



PIPING INSTALLATION

Please connect all pipes, pre-filtration system (optional) and the faucet connection cable with corresponding connector from the water dispenser as shown by below drawing.



HOT OPERATION METHOD

1. Ensure the power switches at rear panel are OFF, then plug in the power cord and connect inlet water.

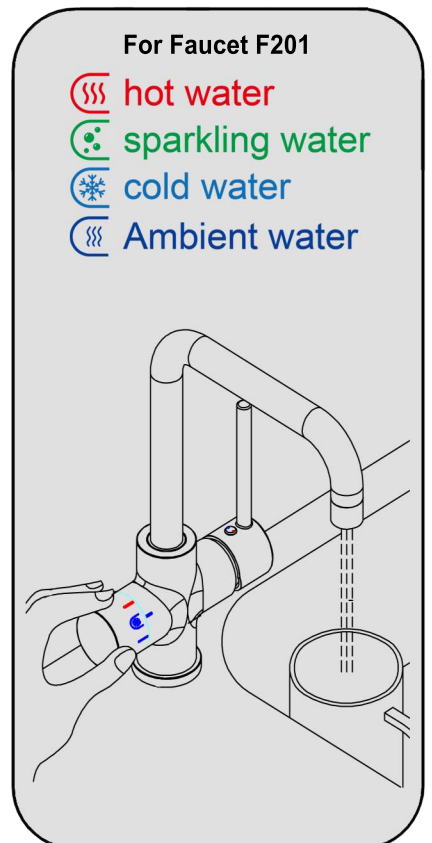
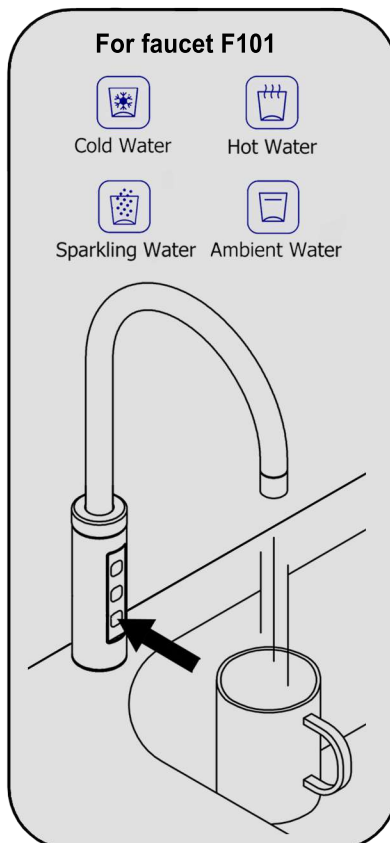
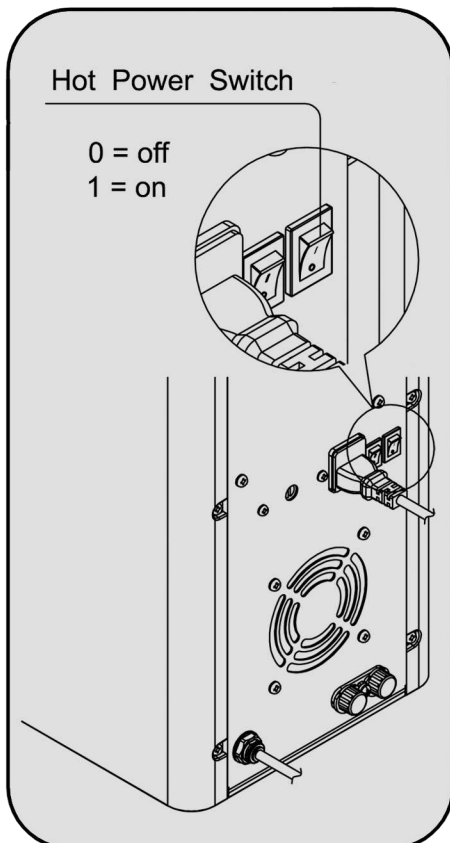
2. Please dispense some cold or ambient water out to ensure there is water from water supply.

Note: This is very important to prevent hot tank dry-heat.

Based on safety reasons, each time pressing unlock button, hot water button must be unlocked firstly then pressed for 2 seconds to dispense hot water. After the first dispense, hot water may be dispensed right away during the same unlocking period.

3. Turn on hot power switch at back, the machine will start heating immediately. The reheating will be started automatically when hot water temperature is too low.

For secure reason, the dispensing is limited within 60 seconds. If you need more water please touch button again.



HOT OPERATION METHOD

The setting button on the panel may be used to change the maximum heating temperature of hot water according to the local geographic conditions to prevent over-boiling.

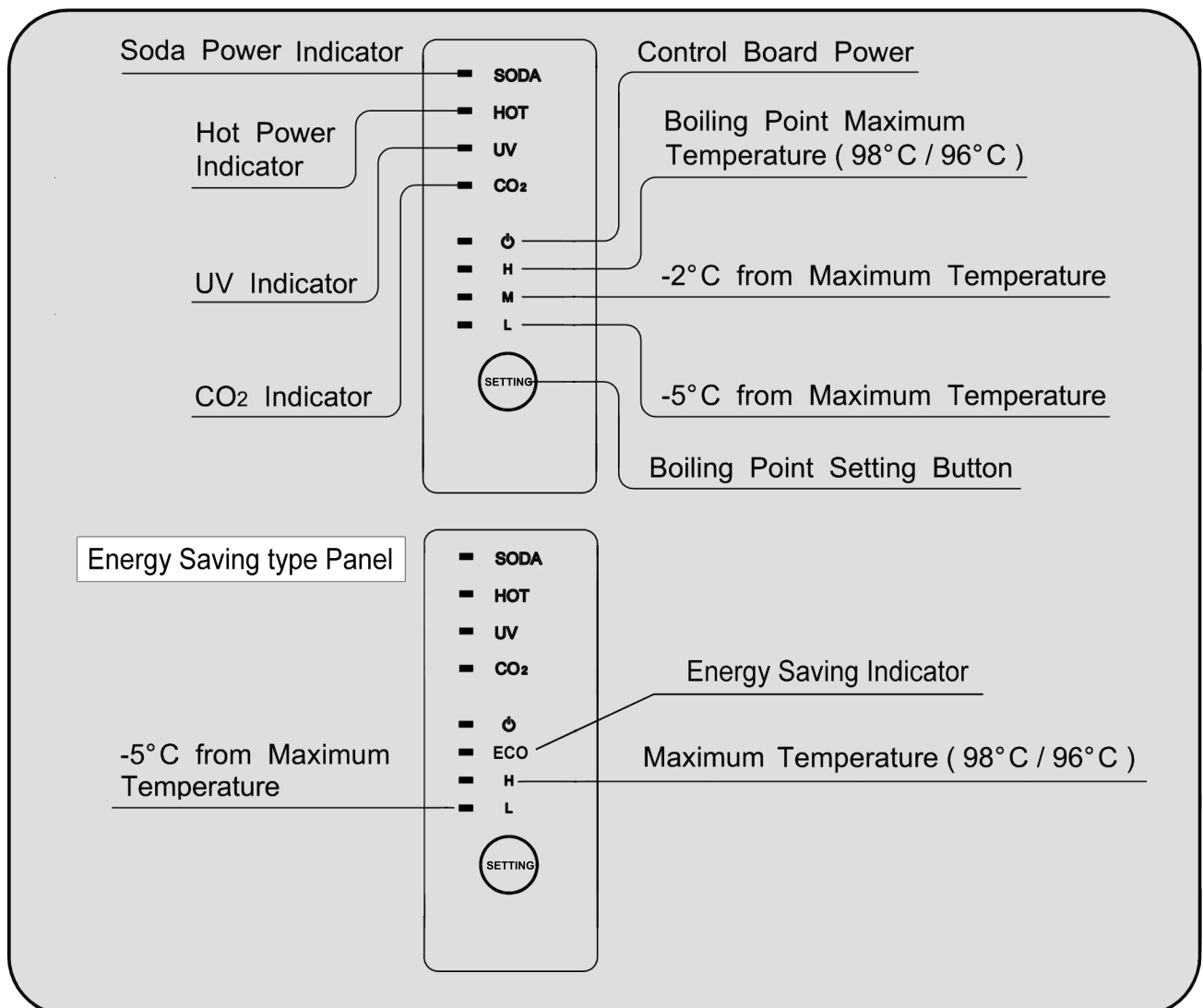
To change the maximum heating temperature :

1. Press setting button once to enter setting mode.
2. Under setting mode, press setting button to change option. The selected option will be blinking.
3. Press and hold setting button for 2 seconds to save and change the selected option and complete the process. There is beep sound to remind user that setting process changing is succeeded.

H: Maximum temperature as default setting (98°C / 96°C)

M: -2°C from maximum temperature

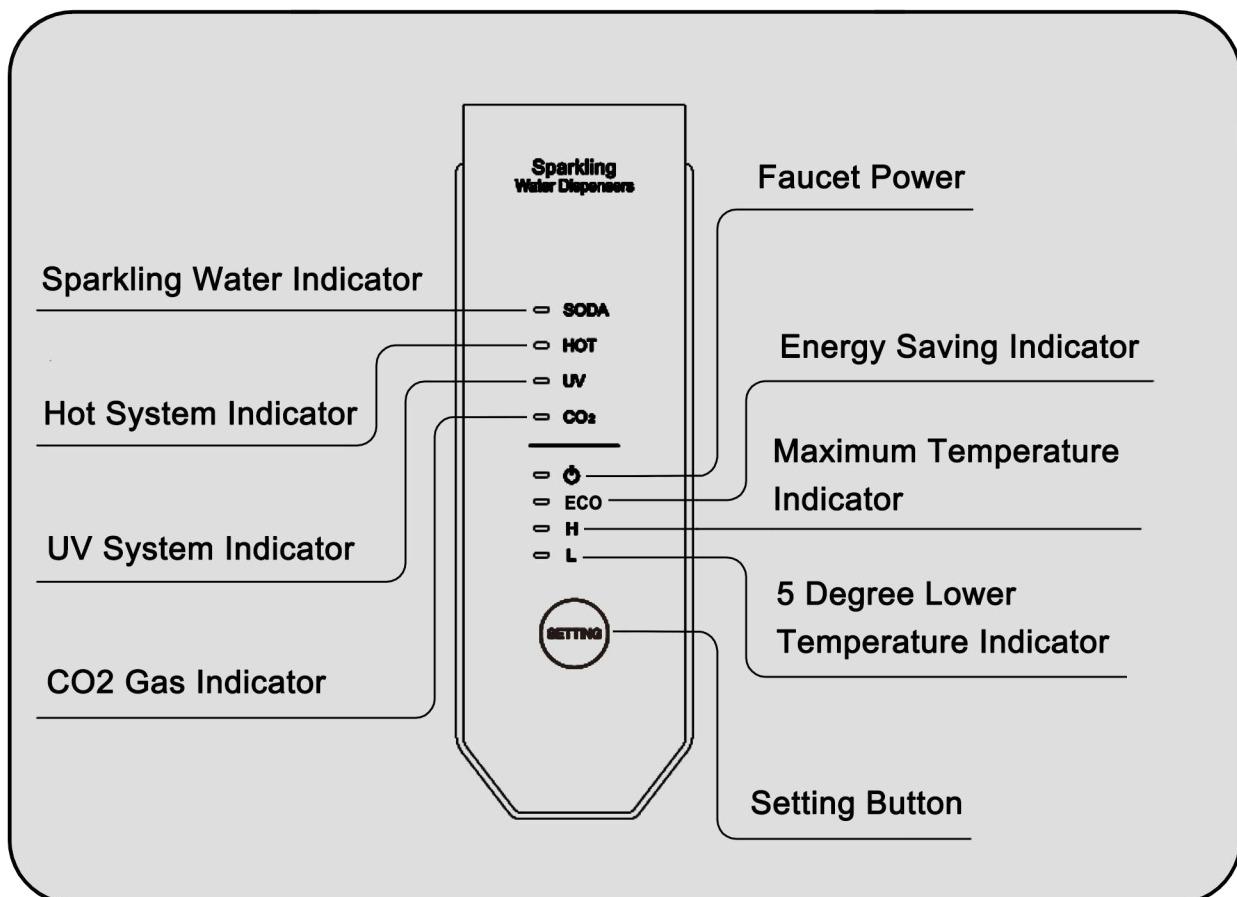
L: -5°C from maximum temperature



INDICATOR INSTRUCTION

The indicator on front panel:

- SODA** : When sparkling water is being filled, the light is blinking.
- HOT** : The heating system is on/off; turn the hot power switch on/off will enable/disable the heating system.
- UV** : The light will be on when dispensing cold/ambient/sparkling water, it means the UV sterilization system is working.
- CO₂** : When a CO₂ cylinder is connected, the light will be on; if the CO₂ gas volume is low or the CO₂ cylinder is disconnected, the light is off.
- Power** : Light on= faucet is standby mode, can be used; light off= faucet is off, unable to be used.
- ECO** : Light on= energy saving mode is enabled; light off= energy saving mode is disabled.
- H** : Set to maximum temperature.
- L** : Set 5 degree lower temperature.

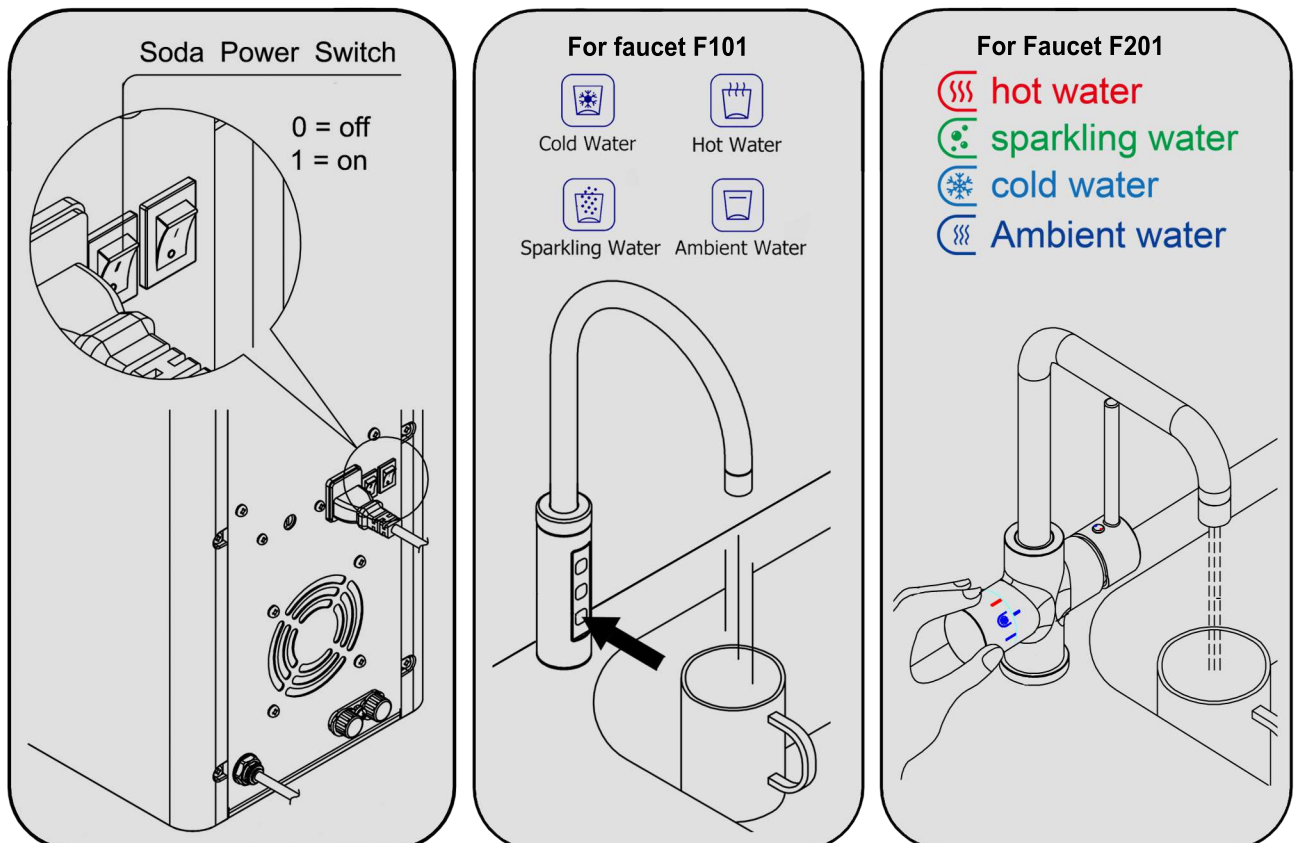


SODA OPERATION METHOD

Press any button on faucet panel once to unlock dispensing function.

1. Press ambient or cold water (if there is no ambient water option) button to dispense some water to confirm there is water from water supply, before turn on soda power switch.
2. Turn on the soda power switch at rear panel, then press any button to allow mains water filling into soda tank; water filling will take up to 5 minutes.
3. Please wait approximately 1 to 2 hour after installation, in order to have the best quality sparkling water.
4. After 1 to 2 hours chilling time, the sparkling and cold water will be cold enough for drinking.

For secure reason, each time water dispensing is limited for maximum 60 seconds. If more water is needed please press button again.

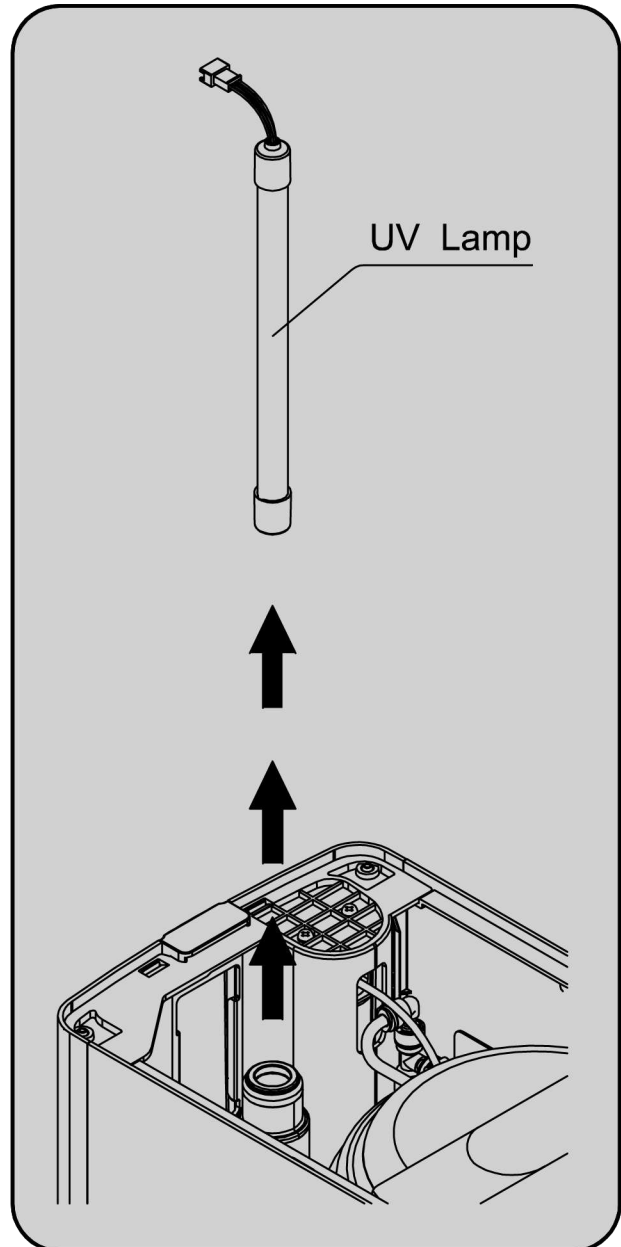
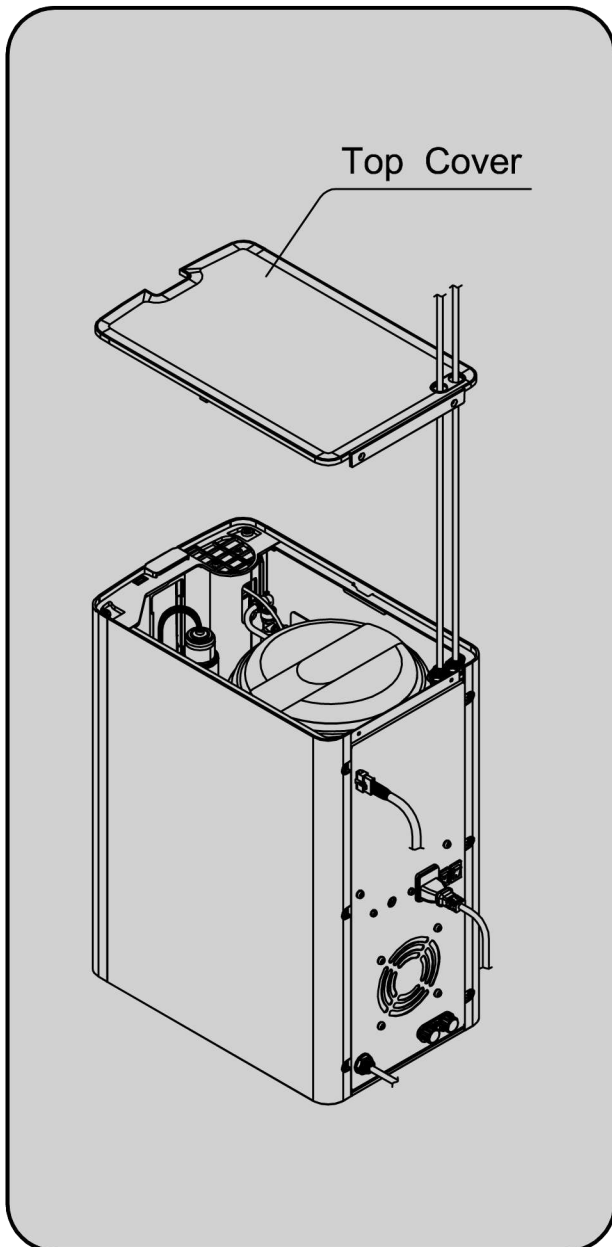


UV LAMP REPLACEMENT

Please replace UV lamp immediately when hearing 2 beeps while dispensing water and the UV indicator on the touch panel is flashing.

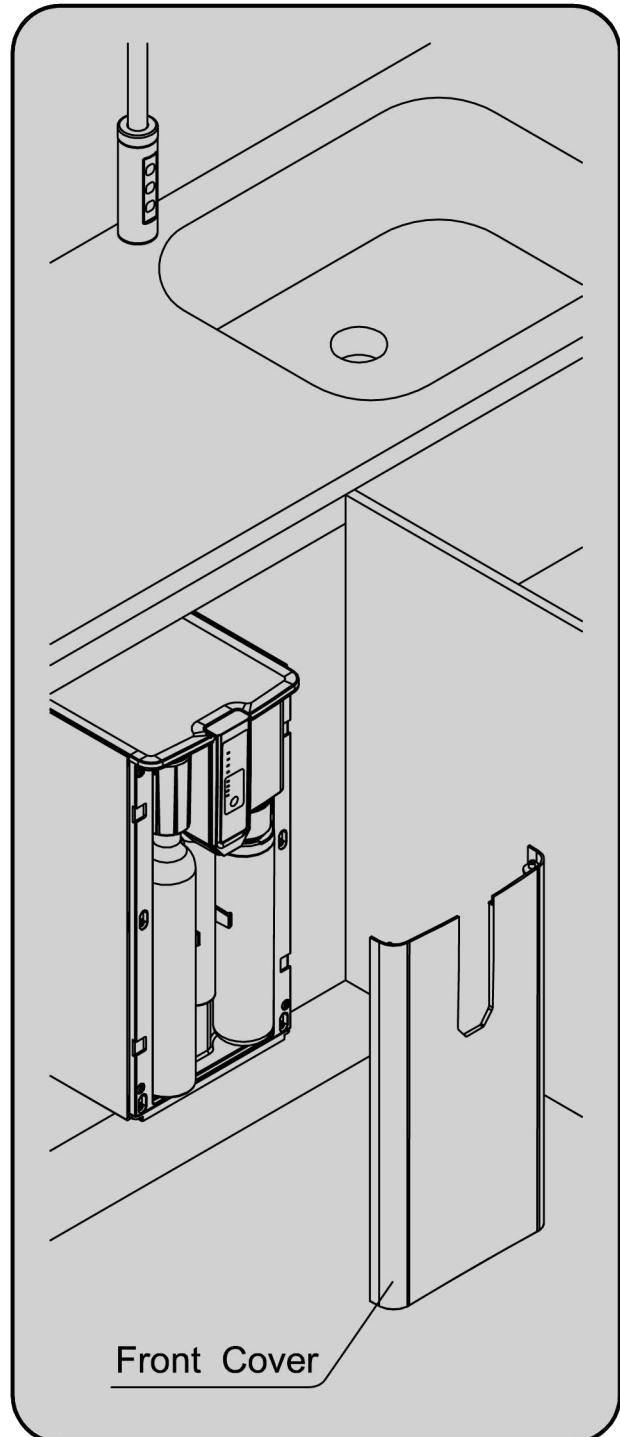
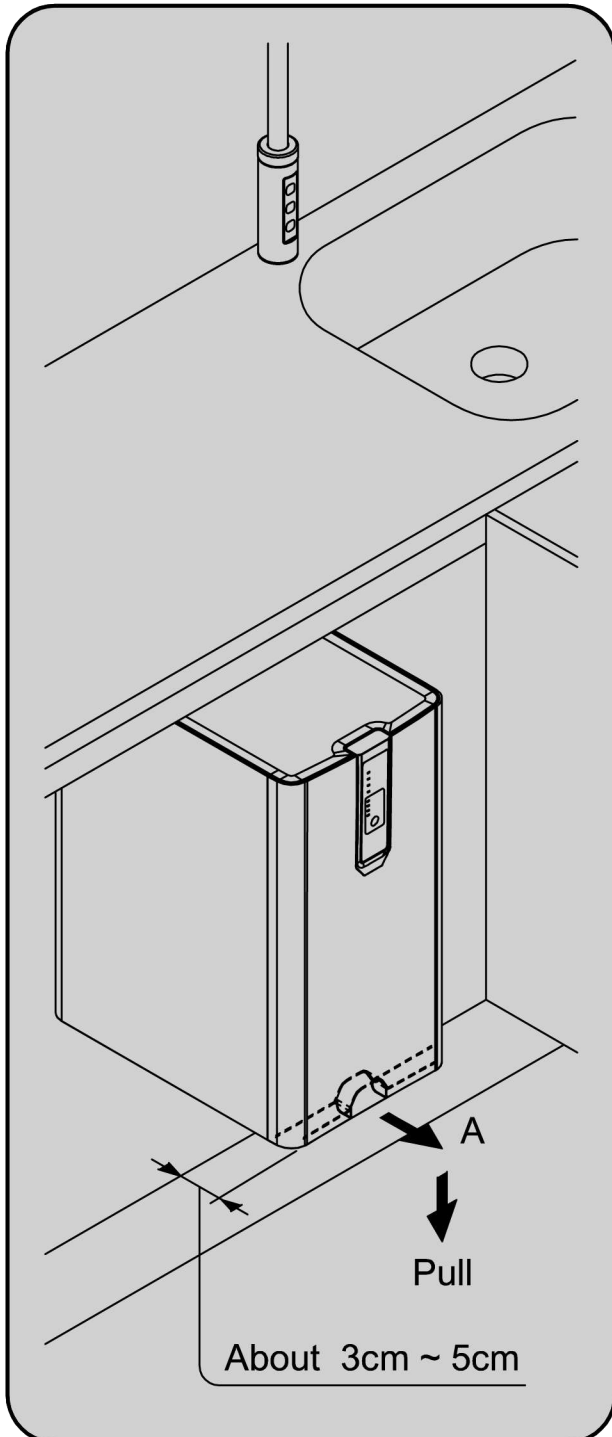
Replacement procedures :

1. Unplug the power cord and take off the top cover by removing screws on the rear upper side.
2. Disconnect the UV wire from the unit and remove the UV lamp from its housing.
3. Replace a new UV lamp back to the housing and connect the wire to the dispenser again.



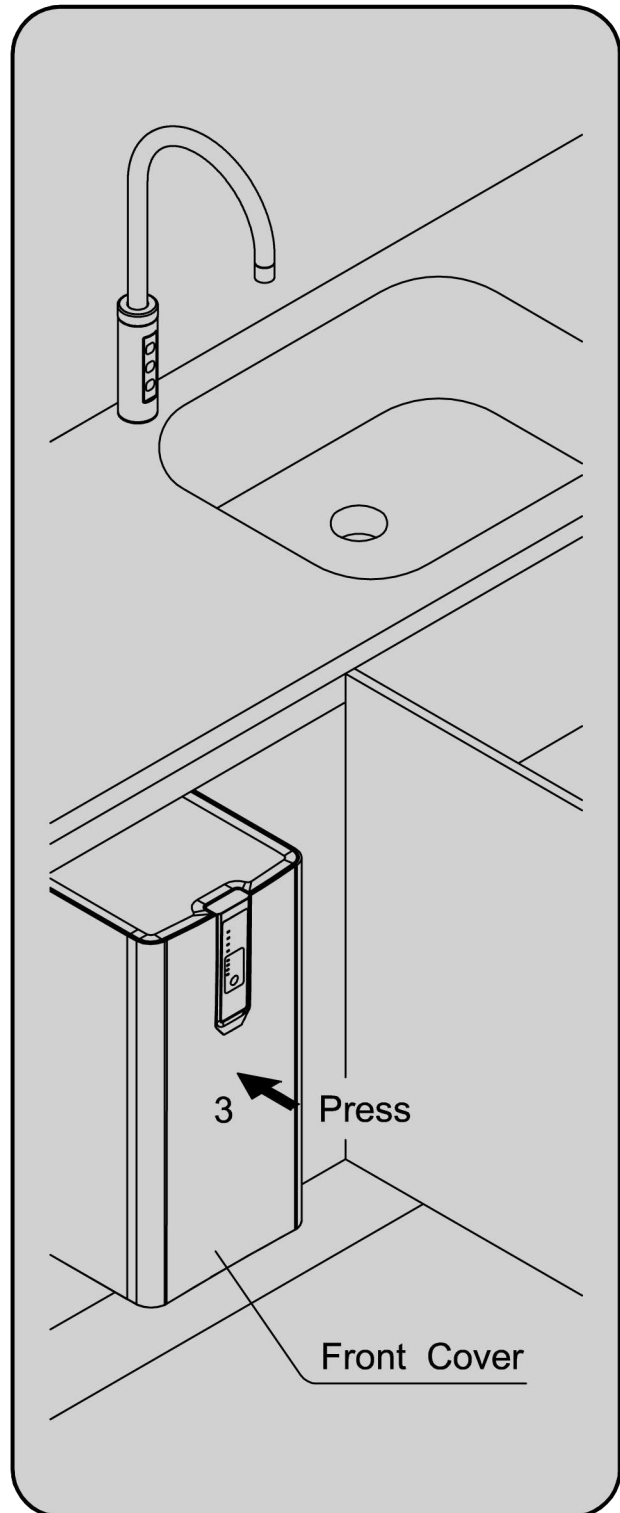
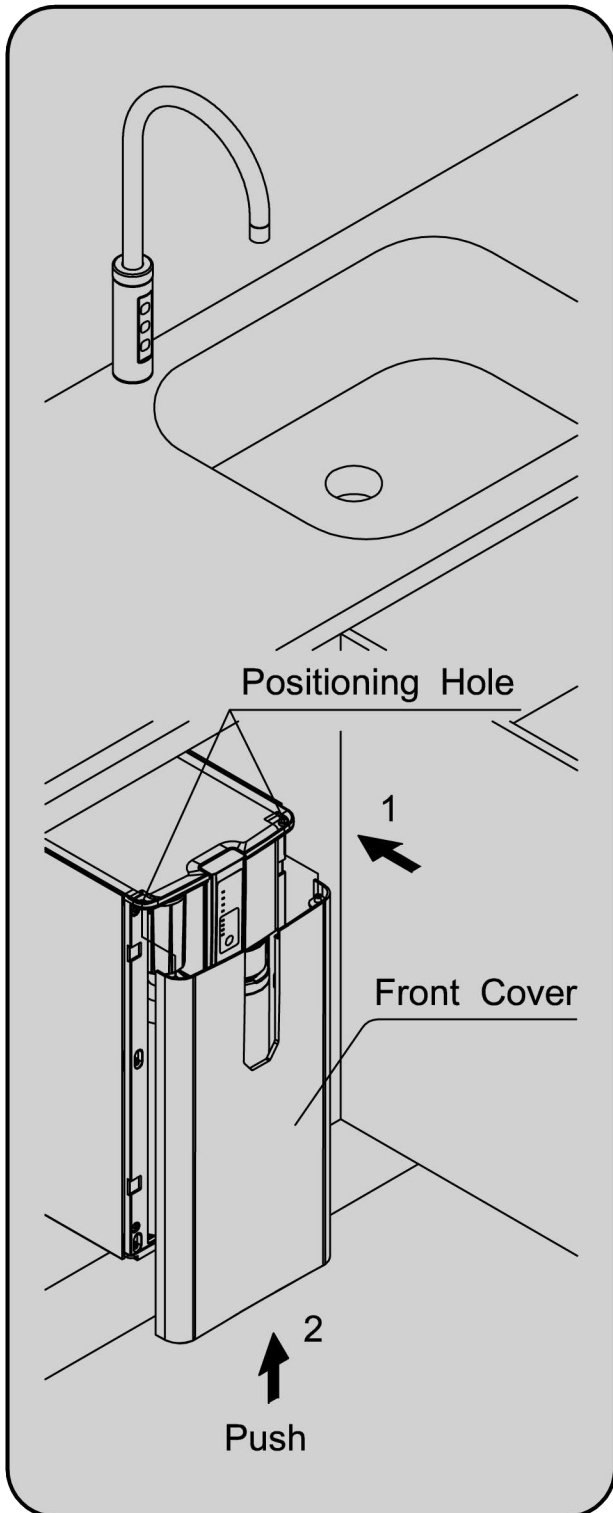
FRONT PLATE DISASSEMBLE

1. Pull out the unit to leave about 3 to 5cm of the front side in air to make room for detaching the front cover.
2. Lift the front cover outward and pull it down as shown by the arrows in drawing 3 to remove the front cover.



FRONT PLATE DISASSEMBLE

Hold the front cover to aim for the positioning holes on the top and push it up slightly. Then press the cover in to mount it on the unit firmly.

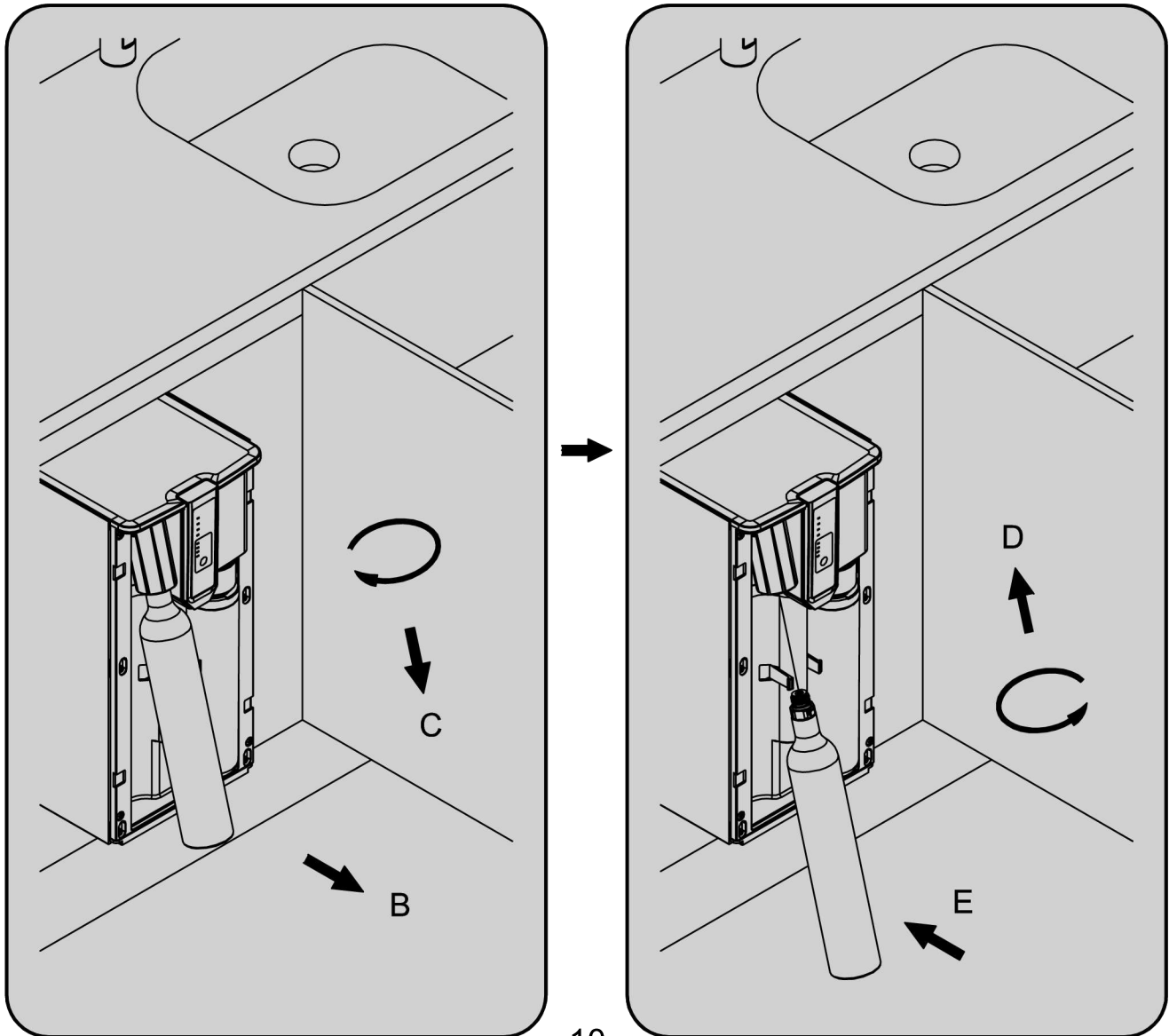


CO₂ CYLINDER REPLACEMENT

When CO₂ is going low, the CO₂ indicator on the touch panel will be off. Please replace a new CO₂ cylinder (CO₂ cylinder : 425g , 60L)

Replacement procedures :

1. Please remove the front cover by instructions shown on page 8.
2. Lift up the CO₂ cylinder as directed by arrow B shown in the drawing below, then twist it in clockwise direction to disconnect.
3. Attach the new CO₂ cylinder to the connector and twist in counterclockwise direction to connect. Please be sure to tighten it properly.
4. Push the CO₂ cylinder back to the slot then place the front cover back by following the instructions on page 9.

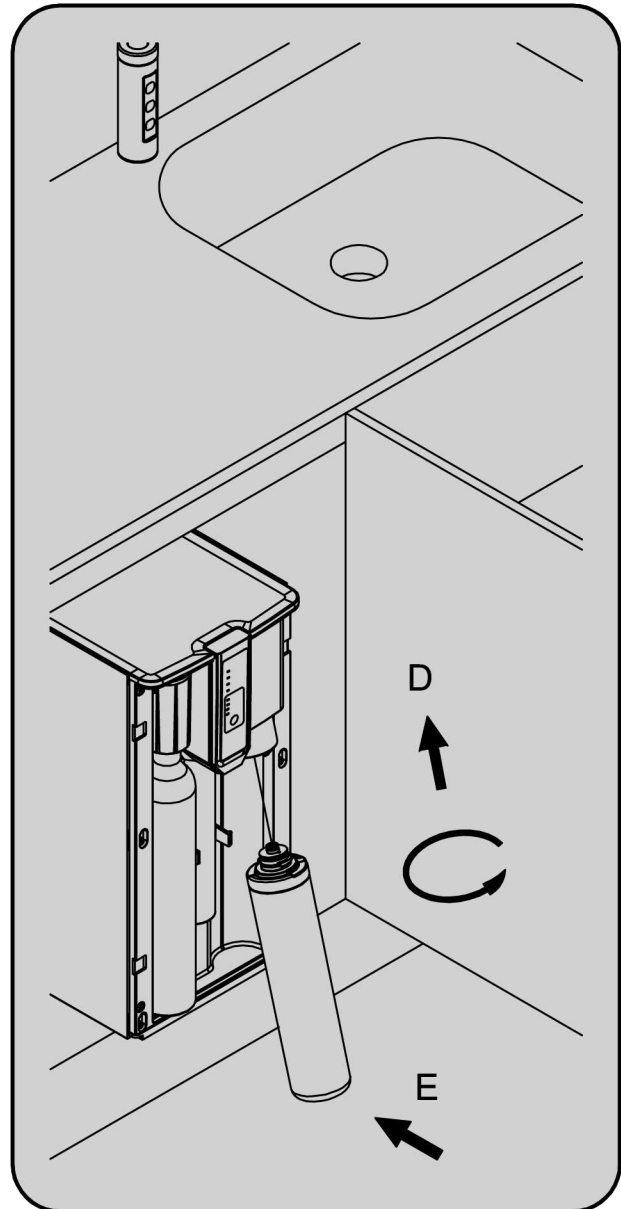
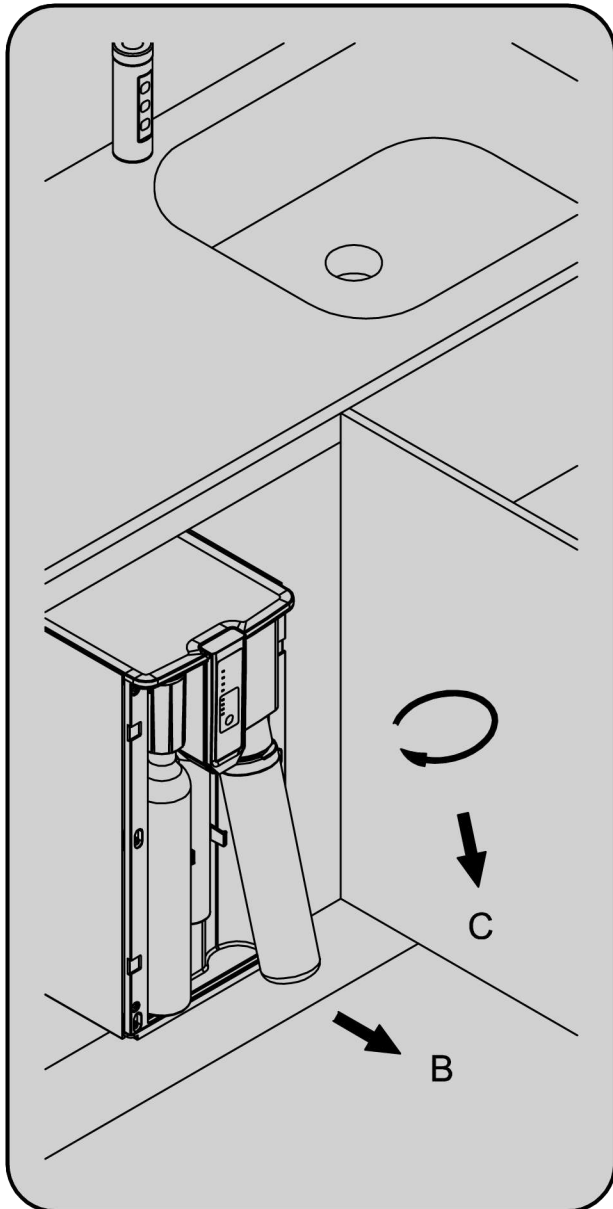


FILTER REPLACEMENT

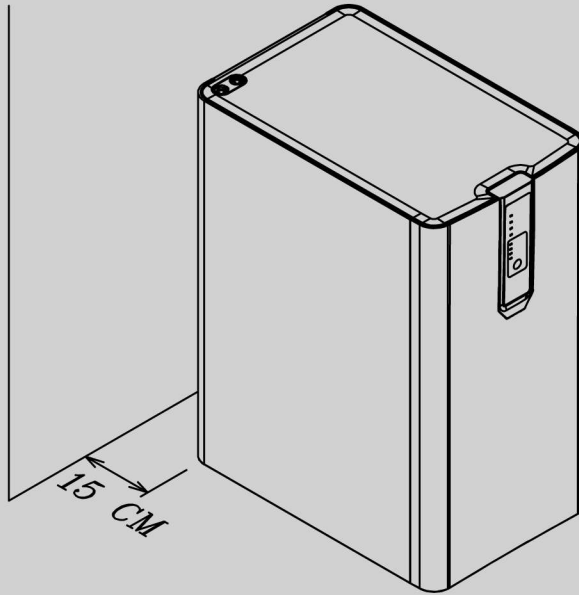
To ensure the drinking water quality, please replace the filter regularly base on the local water quality.

Replacement procedures :

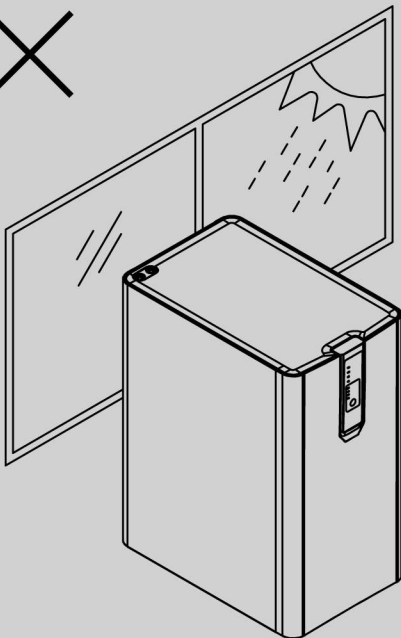
1. Please remove the front cover by instructions shown on page 8.
2. Lift up the filter as directed by arrow B, then twist it in clockwise direction to remove.
3. Attach the new filter and connect it by twisting in counterclockwise direction to tighten. Then push the filter back into the slot to complete replacing.
4. Place the front cover back by following the instructions on page 9.



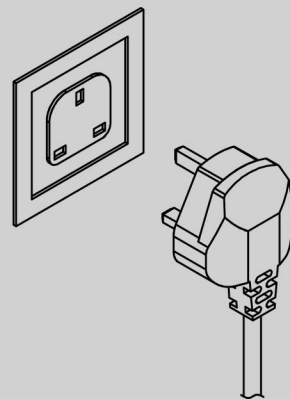
SAFETY REMINDER



Please consider a well-ventilated environment.

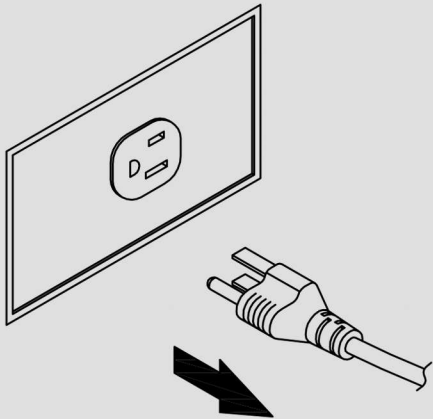


Keep the machine away from sunlight, heat, and moisture.



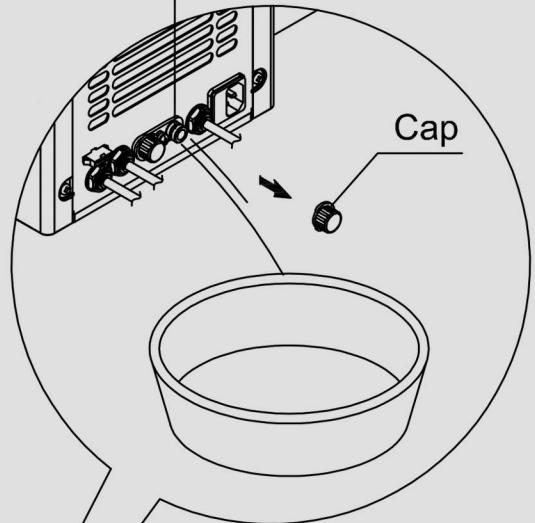
Be sure to use single outlet socket with correct power voltage. Plug the power cord directly into electrical socket.

CLEANING & MAINTENANCE

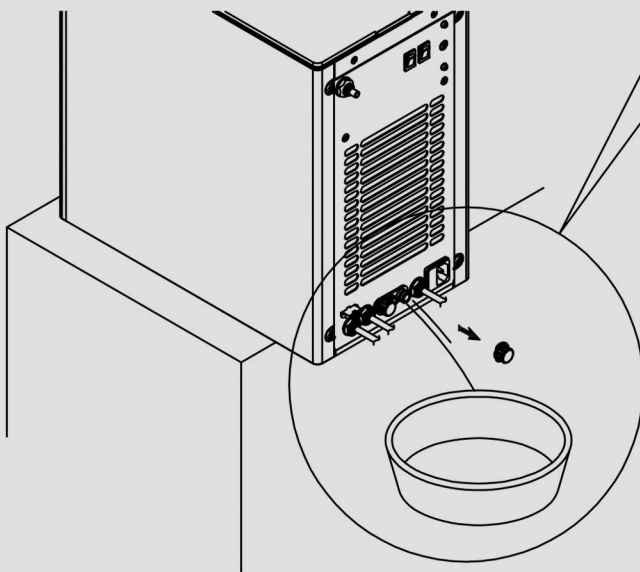


1. Please make sure the machine is completely disconnected from electricity before cleaning.

Hot Water Drain



2. Remove the cap of hot water drain. The remaining water in the tank will drain out. Cleaning may start when both tank are emptied. Please put the cap back when cleaning is done.



Caution : 1. Prevent water entering into the circuit board or other electric parts while cleaning. The dispenser maybe damaged if water go into interior electric parts.



2. For your safety , please contact your distributor or qualified technician for repair when the water dispenser is damaged.

TROUBLESHOOTING

Issue	Possible Reason	Solution
Hot water is not hot	1. The hot power switch is off.	Turn the hot power switch on. Please wait for at least 10 minutes.
	2. Problem with PCB (Printed Circuit Board) or thermostat or heater.	Call service provider, or replace a new part. (PCB, or thermostat or hot tank)
	3. The heating element protection is on due to dry heat.	Be sure hot water can be dispensed, then reset protection for the hot tank.
No hot water	1. No water from mains water supply.	Check inlet water supply.
	2. Inlet water pressure too low.	Check inlet water pressure from pre-filter system or water supply.
	3. Water is not being filled into hot tank fully.	Press hot button to feed water into hot tank until water is dispensed from tap.
	4. Leaking protection is on, due to leaking is detected. The machine is locked when the leaking occurs inside.	Unplug the machine then open left side panel to find detection probe on the base. Repair leaking part, clean water around detection probe then plug in power cord.
Cold water is not cold	1. The cold power switch is turned off.	Turn the cold power switch on.
	2. Chilling time not	Please wait for 60 minutes for water to chill.
	3. Compressor failed or the refrigerant leaked.	Call service provider. The refrigerant R600a is flammable, please protect from sources of ignition and ensure adequate ventilation.
	4. Poor ventilaton.	Leave at least 15 cm space between wall and machine or check if fan is working.
No cold water	1. Waste water container is full. (If there is)	Empty container, following instructions.
	2. No water from mains water supply.	Check inlet water supply and its pressure.
	3. Inlet water pressure is too low.	Check inlet water pressure from pre-filter system or water supply.
	4. Leaking proection is on, due to leaking is detected. The machine is locked when the leaking occurs inside.	Unplug the machine then open left side panel to find detection probe on the base. Repair leaking part, clean water around detection probe then plug in power cord.

TROUBLESHOOTING

Issue	Possible reason	Solution
No sparkling water.	1. CO ₂ cylinder is empty.	Replace CO ₂ cylinder.
	2. The sparkling water power switch is off.	Turn the sparkling water power switch on.
	3. No water is supplied.	Check inlet water supply.
	4. Water is unable to fill sparkling water tank.	Problem with filling system, please call service provider.
Hot water is dripping from tap.	1. The pressure of Inlet water supply is too low.	Check inlet pressure from pre-filtration system or water supply.
	2. Solenoid valve failure	Switch off machine, close inlet valve and call service provider.
	3. Water is over boiled.	The thermostat on hot tank failed, find the hot tank and replace a new thermostat.
Cold or ambient water is dripping from tap.	1. Inlet pressure is too high.	Check inlet water supply.
	2. Solenoid valve failure	Switch off machine, close inlet water valve and call service provider.
Sparkling water is dripping from tap after dispensing.	1.CO ₂ pressure forcing water through tap.	A few drops after dispensing is normal. If it continues, it can be solenoid valve failure, please call service provider
	2. Solenoid valve failure	Switch off, close inlet valve and call service provider.
UV indicator light is blinking and making beeps when dispensing water.	1. UV lamp has failed or UV lamp is disconnected.	Unplug power cord to turn off machine. Replace a UV lamp by following UV replacement instruction, then be sure that the UV wire is connected.
	2. UV board has failed.	To replace it or call service provder.
All dispensing buttons are blinking when one button is pressed.	1. Waste water container or drip tray is full.	Empty container, following instructions.
	2. Leak detected inside of water dispenser.	Unplug the machine then open left side panel to find detection probe on the base. Repair leaking part, clean water around detection probe then plug in power cord.
Sparkling water is nearly flat, insufficient gas content in water water.	1. The CO ₂ and water have not mixed properly.	Please wait longer time or wait about two hours after installation before dispensing.
	2. CO ₂ cylinder is nearly empty.	Replace a CO ₂ cylinder.
	3. CO ₂ output pressure is too low.	Adjust CO ₂ pressure higher; suggestion pressure is 4 bar.

TROUBLESHOOTING

Issue	Possible Reason	Solution
All indicator light on front panel is blinking and beeping.	Water leaks inside.	Turn off power and water supply, then open side panel to check leaking. Clean all water on base to restore machine.
Faucet outlet light is blinking, and water is unable to be dispensed.	The waste water container is full.	Please drain water from waste water container.
The indicator light H, M and L at front panel is blinking.	Abnormal long heating time	Replace a hot tank or the relay board
The indicator light M and L at front panel is blinking (light H is off).	No water in hot tank, the temperature is 105 degrees	Check water pressure from inlet water supply or pre-filtration system
The indicator light H and L at front panel is blinking (light M is off).	Dry heating	Check water pressure from inlet water supply or pre-filtration system
The "HOT" indicator light on front panel is blinking.	No water was filled into hot water tank.	Check water pressure from inlet water supply or pre-filtration system